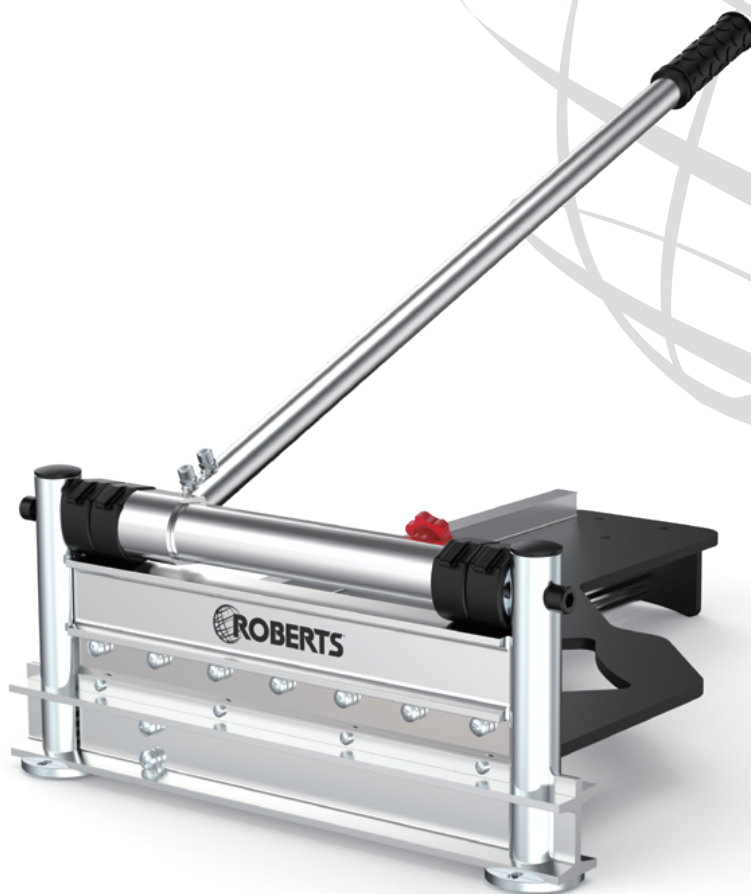




330mm Multi-Floor Cutter

OWNER'S MANUAL



 **WARNING** Read and understand all instructions. Failure to follow all instructions may result in serious bodily injury. **SAVE THESE INSTRUCTIONS FOR FUTURE REFERENCE**



WARNING! FAILURE TO FOLLOW THESE RULES MAY RESULT IN SERIOUS INJURY!

USING THIS MACHINE WITH RESPECT AND CAUTION WILL CONSIDERABLY LESSEN THE POSSIBILITY OF PERSONAL INJURY.

SAFETY RULES

1. **READ AND UNDERSTAND THIS INSTRUCTION MANUAL BEFORE OPERATING THE 330mm MULTI-FLOOR CUTTER.**
2. If you are not thoroughly familiar with the operation of the 330mm Multi-Floor Cutter, obtain advice from a qualified instructor .
3. Stay alert. Do not operate while under the influence of drugs, alcohol, or medication.
4. Always wear safety approved eye protection with side shields .
5. Keep work area clean and free of debris.
6. Keep children and unauthorised persons away from the 330mm Multi-Floor Cutter and work area.
7. Make sure tool is secure. Operate only on a firm substrate or solid stand.
8. Use the right tool. Do not force the 330mm Multi-Floor Cutter or use it for a job for which it was not designed; use only on approved materials.
9. Keep blade sharp. A dull blade will not perform properly.
10. Always keep hands away from blade while operating or carrying.
11. Do not alter or misuse this tool. The 330mm Multi-Floor Cutter is precision built; modifications not specified in this manual may result in a dangerous condition.
12. Maintain the 330mm Multi-Floor Cutter with care. Keep blade sharp and clean. Follow instructions for lubricating and changing accessories.
13. Use only recommended accessories. The use of improper accessories may cause hazards or injury.
14. Never leave the 330mm Multi-Floor Cutter unattended. Secure the handle with the lock chain when not in use.
15. Warning: The dust generated by cutting certain wood, wood fibre and / or PVC products can be harmful to your health.

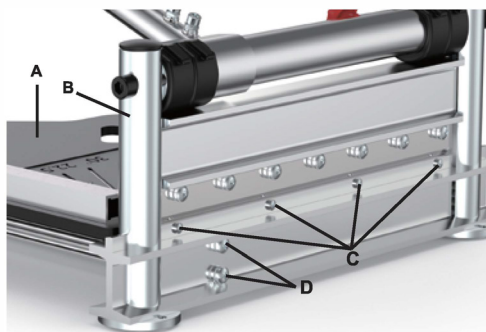


FIGURE 1



FIGURE 2



FIGURE 3

ASSEMBLY

Assemble the table assembly (Fig. 1-A) Fig.1 to the blade assembly (Fig. 1-B) using 4 small Phillips head screws (Fig. 1-C) to secure the top of the table. Use two larger pan head screws (Fig.1-D) to secure the table brace.

Assemble the handle (Fig. 2-A) to the top of the blade assembly. First, loosen the two fixing screws (Fig. 2-B) using a hex key. Insert the handle shaft into the cylindrical hole, make sure the recessed hole lines up with the centre screw. Once properly aligned and inserted, tighten the center fixing screw using a hex key. Then tighten the other two fixing screws.

SETTING UP FOR OPERATION

The laminate flooring cutter is shipped with the blade assembly in the down and locked position. This safety feature ensures that the cutting edge of the blade is not exposed during transport or storage. To unlock the blade assembly, loosen the safety lock knob (Fig. 3-A), depress the handle then slide the lock knob to the right to disengage the lock (Fig. 3-B).

⚠ WARNING Secure handle in the down position and re-engage the safety lock before storing, carrying or transporting your laminate flooring cutter.

CUTTING

CUTTING PREPARATION

Adjust the angle attachment to desired angle as needed (15°, 22.5°, 30°, 45°).

The angle attachment can be used on left side of the table (Fig. 4).

⚠ WARNING Do not put your fingers against the sharp edge of the blade at any time.

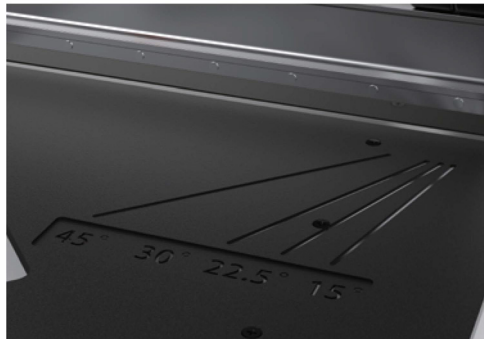


FIGURE 4

STRAIGHT CUTTING

Insert material between the cutting blade and the base, flush with the angle attachment (Fig. 5) and hold the material with foot then push handle down to complete a cut.

⚠ WARNING Maintain control of the handle. Do not allow handle to slam back after making cut.

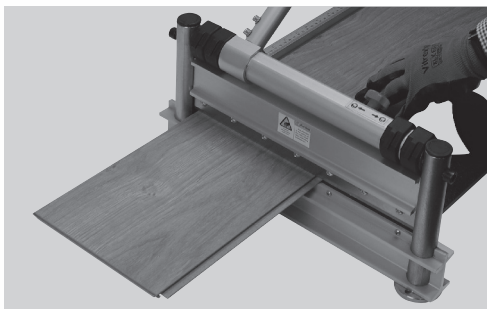


FIGURE 5

45° CUTTING

Insert the angle attachment to 45°. Insert material between the cutting blade and the base, against the angle attachment (Fig. 6), then push the handle down to complete a cut.

⚠ WARNING Maintain control of the handle. Do not allow handle to slam back after making cut.

⚠ WARNING Do not put your fingers against the sharp edge of the blade at any time.



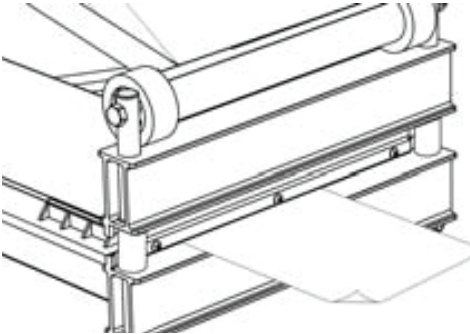
FIGURE 6



CUT GUIDE

Your tool cuts a wide variety of products. Please refer to this cut guide for recommended products and thicknesses.

- Laminate Flooring 13mm
- Vinyl Composite Tile 13mm
- Soft Plastic 13mm
- Vinyl Siding 13mm
- Fibre Cement Siding 13mm



MAINTENANCE

HONING BLADE

Removing burrs from the flat edge of the blade is very important, honing a new blade should be done after the first 40-100 cuts, after every 100+ cuts and when the blade has been re-sharpened.

With the blade (Fig. 7-B) installed and positioned roughly 3mm above the table top, lay the flat side of your honing stone (Fig. 7-A) against the flat side of the blade. Move the honing stone from one end to the other a few times until burr has been removed.

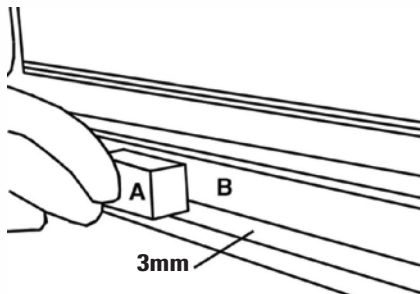


FIGURE 7

SHARPENING OR REPLACING BLADE

The included blade can be sharpened. Only the bevelled edge of the blade must be sharpened. The flat edge of the blade must remain flat. We recommend that this operation be done by a qualified professional.

⚠ WARNING Blade is very sharp. Wear gloves when handling blade.

1. To remove the blade (Fig. 8-A), remove the seven allen head screws (Fig. 8-B) using the supplied hex key. Carefully remove the blade.
2. Once blade has been sharpened or replaced, it can be re-installed. Position the blade (Fig. 9-A) with its flat edge facing the table (Fig. 9-B). Make sure the mounting surface and blade are clean, re-install the blade with the seven allen head screws removed earlier using the supplied hex key.

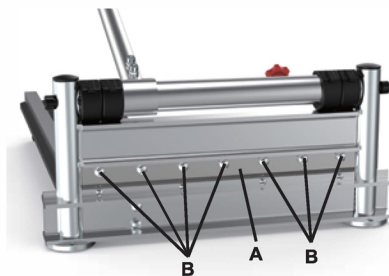


FIGURE 8

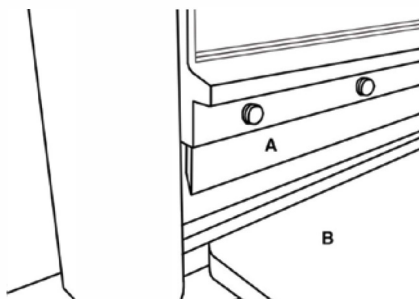


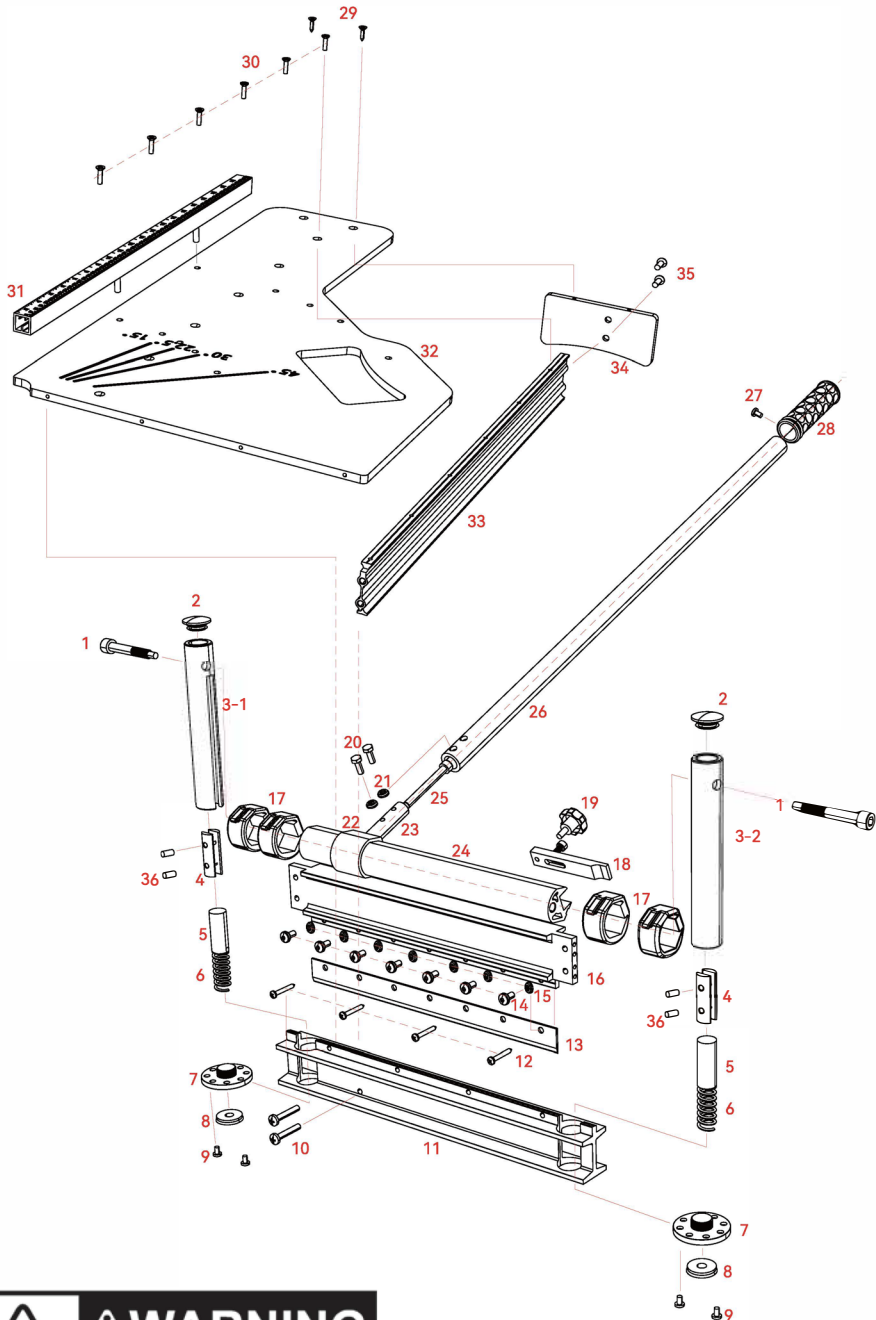
FIGURE 9

LUBRICATION

To prevent surface corrosion, it is recommended to apply a small amount of light machine oil on the sliding parts of the laminate cutter. Lubrication should be done once every two months or once a month if working in dirty or dusty conditions.



EXPLODED PARTS DIAGRAM



PARTS LIST

| NO. | DESCRIPTION | QTY |
|-----|-------------------------|-----|
| 1 | Cap screw | 2 |
| 2 | Plastic end cap | 2 |
| 3 | Guide sleeve | 2 |
| 4 | Guiding plate | 2 |
| 5 | Guiding rod | 2 |
| 6 | Spring | 2 |
| 7 | Adjustable plate | 2 |
| 8 | Rubber foot | 2 |
| 9 | Countersunk hd screw | 4 |
| 10 | Pan hd screw | 2 |
| 11 | Lower body | 1 |
| 12 | Pan hd screw | 4 |
| 13 | Lower body | 1 |
| 14 | Round hd allen screw | 7 |
| 15 | Spring washer | 7 |
| 16 | Upper body | 1 |
| 17 | Cam | 4 |
| 18 | Stop block | 1 |
| 19 | Stop knob | 1 |
| 20 | Cap screw | 2 |
| 21 | Washer | 2 |
| 22 | Fixed shaft sleeve | 1 |
| 23 | Fixed shaft | 1 |
| 24 | Camshaft | 1 |
| 25 | Cap screw | 1 |
| 26 | Handle | 1 |
| 27 | Countersunk screw | 1 |
| 28 | Handle grip | 1 |
| 29 | Countersunk hd screw | 2 |
| 30 | Countersunk hd screw | 6 |
| 31 | Guiding rule | 1 |
| 32 | Work table | 1 |
| 33 | Work table support | 1 |
| 34 | Work table foot | 1 |
| 35 | Round hd Phillips screw | 2 |

Scan here to
FIND OUT MORE



www.robertsfit.co.uk

Tel: +44 (0) 1283 245 430

QEP Co. UK Ltd., The Maltsters, Wetmore Road, Burton upon Trent DE14 1LS

WARNING: Drilling, sawing, sanding or machining wood products can expose you to wood dust. Avoid inhaling wood dust or use a dust mask or other safeguards for personal protection.



It is illegal to sell bladed objects such as knives and shears to individuals under the age of 18

Made in China

6.45kg

R1061A

